

AFMatic®

- Capable
- Accurate
- Easy To Use

FOR TECHNICAL QUESTIONS,
OR TO REQUEST A FREE
90-DAY TRIAL COPY:
TYBEE JET CORPORATION
WWW.TYBEEJET.COM
615-308-7216



Gulfstream®
AIRCRAFT SERVICES

P.O. BOX 2206
SAVANNAH, GA 31402-2206
WWW.GULFSTREAM.COM
912-965-3204

AFMATIC USED IN GULFSTREAM FLIGHT OPERATIONS

“ I use AFMatic on a routine basis both in the office and on the road. It's an excellent tool for off-airplane performance planning either in the FBO or at the hotel.

I also use AFMatic a lot in the office to answer questions from customers regarding takeoff or landing capabilities at airports that are seldom used by Gulfstream operators. We used AFMatic to calculate the takeoff performance for our GV when we did the record run from Hilton Head, SC to Milan, Italy. I have a great deal of confidence in the performance calculations AFMatic produces and it has more features than the takeoff and landing performance program we get from Honeywell through the FMS. ”

John O'Meara
Gulfstream Chief Test Pilot

“I've used the AFMatic product from its inception and have found it to be a reliable resource for all of my performance needs. The product has evolved from a “nice to have” to a “must have” tool. Additionally, the customer support is accessible, responsive and very knowledgeable of the Gulfstream product.”

James A. Smith III, Training Captain
G1159, GIV, GV

“AFMatic is an essential preflight planning tool, allowing us to evaluate even the most challenging missions with confidence. I know of no other product that allows us to squeeze the maximum performance out of the airplane and enhance the safety of the flight at the same time.”

Mike Foley, Safety Captain
GIV, G550

“AFMatic is absolutely essential, even if you fly only from major airports. Without AFMatic we would have been forced to cancel the flight when we had an anti-skid failure at ASE. Using the tab data we determined we had to offload fuel or wait until the temperature dropped. With AFMatic, we could enter the exact temperature and wind, and found we were legal. AFMatic paid for itself forever on this one flight!”

John Miller, Captain
GIV, GV

AFMatic®



Performance
Fuel Cost Savings
Weight and Balance
for
Gulfstream Aircraft



ALL-IN-ONE TOOL SAVES YOU TIME AND MONEY

From takeoff performance, to weight and balance, to saving money on fuel, there's never been an easier or more capable way to compute Gulfstream aircraft performance. It's like having a performance engineer in your computer, always ready with the answers you need.

AFMatic has been created specifically for Gulfstream pilots, to compute preflight airplane flight manual based performance. Developed by Tybee Jet in cooperation with Gulfstream Aerospace engineers and pilots, *AFMatic* is truly the Swiss Army Knife of Gulfstream performance solutions.

KEY BENEFITS

- ▶ Fuel Cost Savings
- ▶ Easy Takeoff & Landing Performance
- ▶ Flexible Weight & Balance
- ▶ PlaneBook Compatible
- ▶ Regulatory Compliance
- ▶ Consistent, Reproducible Results

FUEL COST SAVINGS

When fuel prices are high, JetMiser™, our unique fuel cost reduction feature, is more than a tool, it's an investment. JetMiser uses the concept of fuel tankering to determine the optimum amount of fuel to load at each fuel stop of a multi-stop trip in order to minimize the total fuel cost for the trip. Not only does *AFMatic* save you time, it saves you money, too!

PLANEBOOK™ COMPATIBILITY

AFMatic is fully compatible with PlaneBook, and is available as an option with the purchase of a PlaneBook computer. Add *AFMatic* to PlaneBook and you have the ultimate pilot tool!

TAKEOFF AND LANDING PERFORMANCE

Takeoff and landing calculations, including effects of contaminated runways, are accomplished by selecting the airport and runway from the integral worldwide airport database, entering atmospheric and configuration information, and pressing COMPUTE. Easy and accurate, *AFMatic*'s calculations have been tested with the same methods used to test the Honeywell FMS.

SID AND OBSTACLE PERFORMANCE

AFMatic gives you four methods of computing SID climb performance, making it the most powerful SID climb calculator in the industry. It also computes obstacle clearance for up to 20 permanent and five temporary obstacles for each runway, using the Net Takeoff Flight Path from the Airplane Flight Manual. Obstacle and SID required climb gradient data are easily added and stored in the airport database by the user.

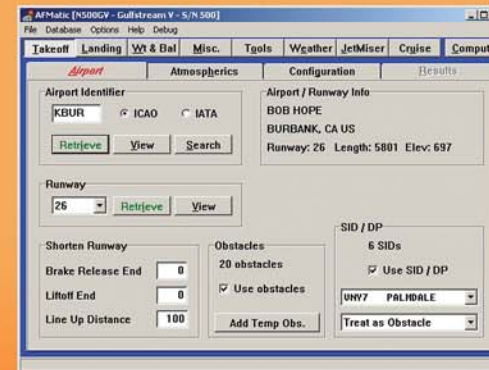
WEIGHT AND BALANCE

AFMatic has extensive and flexible weight and balance calculation capabilities. An easy-to-use point and click interface is backed by AC 120-27E compliant calculations. Multiple configurations are a snap to set up.

REGULATORY COMPLIANCE

AFMatic is a great tool for demonstrating compliance with regulations, whether you are a FAR 91 or 135 operator. And if you are ramp checked, it's a quick way to satisfy the inspector.

AFMatic's clean and simple user interface is evident in the Takeoff Airport entry screen. We made it easy to use so you can spend your time doing what you do best - flying the airplane.



Airport	Atmospheric	Configuration	Results
Rated Thrust Takeoff		FLEX Thrust Takeoff	
Flap Setting:	20°	Flap Setting:	20°
Actual Temperature:	20.0°C	Assumed Temperature:	35.4°C
Max Takeoff Weight:	72353 LB		
Limited By:	SID Grad	Limited By:	SID Grad
Actual Takeoff Weight:	65526 LB	Actual Takeoff Weight:	65526 LB
V1 (Ball):	117 KCAS	V1 (Ball):	117 KCAS
VR:	117 KCAS	VR:	117 KCAS
V2 (Normal Climb):	123 KCAS	V2 (Normal Climb):	123 KCAS
VFS:	152 KCAS	VFS:	152 KCAS
VSE:	158 KCAS	VSE:	158 KCAS
VRef:	124 KCAS	VRef:	124 KCAS
Rated EPR:	1.54	FLEX EPR:	1.52

Results of the calculation. Calculation details are viewed by clicking on the buttons across the bottom of the screen.

ALWAYS UP-TO-DATE

AFMatic is kept current with an annual subscription, delivered by Internet download and CD-ROM on the 28-day chart cycle. Updates include the worldwide airport database, flight manual revisions from Gulfstream, and software upgrades, including operator-suggested enhancements. Whether you're in the office or half a world away, you'll always have the latest information!



ADDITIONAL FEATURES

- ▶ Worldwide Airport Database
- ▶ Alternate Airport Search
- ▶ Weather Reports & Graphics
- ▶ Brake Cooling
- ▶ Pavement Strength
- ▶ Sunrise / Sunset Times
- ▶ Time Zone Conversion
- ▶ Great Circle Route Calculation

WORLDWIDE AIRPORT DATABASE

Detailed airport data are provided for over 7,000 airports with more than 18,000 hard-surfaced runways having lengths of 4,000 feet or greater.



AVAILABILITY BY MODEL

AFMatic is now available for the large-cabin Gulfstreams: G550/G500, GV, G450/G350, G400/G300, GIV, GIV-SP, GIII, and GIIB, as well as the military derivatives. The program will also be updated to add new large-cabin Gulfstream aircraft as they are introduced.